



## Asian Art in Minneapolis May 12<sup>th</sup> to 17<sup>th</sup>, 2025

Please join us on a spring trip to Minneapolis. A highlight of the trip will be visiting the **Minneapolis Institute of Art**, which has one of the finest and most comprehensive Asian art collections in the country. Curator-led tours will focus on Asian art galleries boasting some 16,800 objects, ranging from ancient pottery and bronzes to works by contemporary artists, with nearly every Asian culture represented. We will stay at The Hewing, a four-star boutique hotel in the North Loop neighborhood which is situated in a good walking area among cafes, art galleries, boutique shops and restaurants.

### Other Tour Highlights

- Guided tour of the **Minneapolis Sculpture Garden**, where we will delight in more than 60 works from modern and contemporary artists including Mark di Suvero, Lucio Fontana, Theaster Gates, Sol LeWitt, Claes Oldenburg and Coosje van Bruggen, Martin Puryear, George Segal, Richard Serra, Judith Shea, Angela Two Stars, and James Turrell
- Curator-led tour at **Walker Art Center**, which was expanded in 2005 to stunning effect by Herzog and de Meuron to display its collection of modern and contemporary art, especially works after 1960. Its holdings include more than 13,000 pieces, including books, costumes, drawings, media works, paintings, photography, prints, and sculpture.
- Curator-led tour at **The Museum of Russian Art**, which has built a remarkably diverse permanent collection of works, ranging from paintings and sculpture to objects of folk art and cultural artifacts in the two decades since its establishment
- Curator-led tour at the **Weisman Art Museum** of its Korean collections, the variety and breadth of which is unmatched in the United States, and is perhaps unrivaled outside Asia. The collection includes about 200 examples of Choson dynasty (1392–1910) furniture, 80 Silla dynasty (668–935 B.C.) stoneware pieces, some 150 folk paintings and wooden bowls and utensils, in addition to other folk arts and crafts. Also see its internationally significant collection of American art from the first half of the twentieth century, featuring the world's largest holdings of works by Marsden Hartley, Alfred H. Maurer, and B.J.O. Nordfeldt.

- Possible visit to a **private collection of Russian art** or to the extensively and beautifully restored **Purcell-Cutts House**, a masterpiece of Prairie School Architecture
- **Lecture by Japanese art scholar Joe Earle** related to the Kondo porcelain exhibition at the Minneapolis Institute of Art, followed by a **panel discussion** with artist Kondo Takahiro and curators
- Guided tour at the **American Swedish Institute (ASI)**, whose collection documents Swedish immigration and settlement in America. Among its many objects, ASI houses one of the finest collections of Swedish art glass outside of Sweden, and an exemplary collection of flat-plane wood carvings. Galleries are partially housed in the historic Turnblad Mansion (1904-1908), whose master craftsmen created 33 rooms each with a distinct style and décor—from Gustavian to Moorish.
- Farewell dinner at **Spoon and Stable**, whose Executive Chef Gavin Kaysen received the James Beard Award for Best Chef: Midwest in 2018
- Optional night at The Guthrie Theater to see either *The Mousetrap*, Agatha Christie’s thriller; or *The Nacirema Society Requests the Honor of Your Presence at a Celebration of Their First One Hundred Years*, a clever Southern comedy. *Performances begin at 7:30 p.m.; tickets are \$32-92 including handling fees.*

*PHOTOS (left to right):*

*China, Qing dynasty (1736–1795), Unknown artist, Censer in the shape of a mythical beast, Photo courtesy of Minneapolis Institute of Art*

*China, Han dynasty, c. 180 BCE, Horse and Rider, Earthenware with traces of pigment, The William Hood Dunwoody Fund and purchase through Art Quest 2001, 2001.205a-c, Photo courtesy of Minneapolis Institute of Art*

*Japan, Fukuda Suikō (Japanese, 1895-1973), Gyrfalcon Hunting a Goose in Snow, 1928, two-panel folding screen; ink, color, and gofun on silk, 66 1/16 × 72 5/16 in. (167.8 × 183.67 cm) for image shown, Photo courtesy of Minneapolis Institute of Art*

**Fitness Level: EASY**

This trip involves a stay in just one hotel. There will be standing and walking for extended periods during museum visits or tours. Walking is typically on flat terrain with elevators often available. While we encourage participation in all group activities, a tour participant can opt-out when necessary. We will be walking to restaurants in the evening, which will take 5 to 10 minutes. Travel insurance is recommended for this tour if there is any chance of a health event for you or a family member prior to or during the tour dates.

**Health Requirements:**

Participants should be in good health and with overall good mobility and should be comfortable participating in at least three to five hours of activity per day. Any condition that may require any individual accommodation or special medical attention must be reported at the time you make your reservation.

## Itinerary

**NOTE: The Itinerary – especially times indicated -- are subject to change, and will be confirmed when you receive the updated, final Itinerary two weeks prior to the tour.**

**Monday, May 12<sup>th</sup>**

**Reception**

### **ARRIVAL MINNEAPOLIS**

Arrive at the airport in **Minneapolis** no later than today by 6:30 p.m. Suggested flights to **Minneapolis-Saint Paul International Airport (MSP)**:

Delta Airlines from/to SFO (non-stop)

Outbound from SFO/MSP: Depart 12:35 p.m. / Arrive 6:21 p.m.

Return from MSP/SFO: Depart 11:00 a.m. / Arrive 1:20 p.m.

United Airlines from/to SFO (non-stop)

Outbound from SFO/MSP: Depart 8:30 a.m. / Arrive 2:36 p.m.

Return from MSP/SFO: Depart 6:20 a.m. / Arrive 8:51 a.m.

Or

Depart 3:18 p.m. / Arrive 5:49 p.m.

Southwest Airlines from/to OAK (no non-stop options)

Outbound from OAK/MSP: Depart 8:35 a.m. / Arrive 3:55 p.m. via DEN

Return from MSP/OAK: Depart 6:20 a.m. / Arrive 10:15 p.m. via DEN

or

Depart 5:25 p.m. / Arrive 10:15 p.m. via LAS

Alaska Air from/to SJC (no non-stop options)

Outbound from SJC/MSP: Depart 7:00 a.m. / Arrive 3:25 p.m. via PDX

Return from MSP / SJC: Depart 8:00 a.m. / Arrive 2:10 p.m. via SEA

Or

Depart 1:55 p.m. / Arrive 7:23 p.m. via PDX

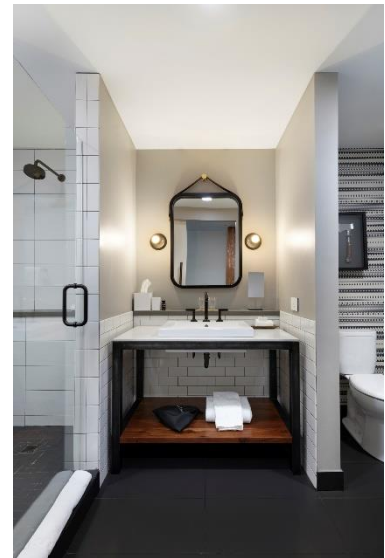
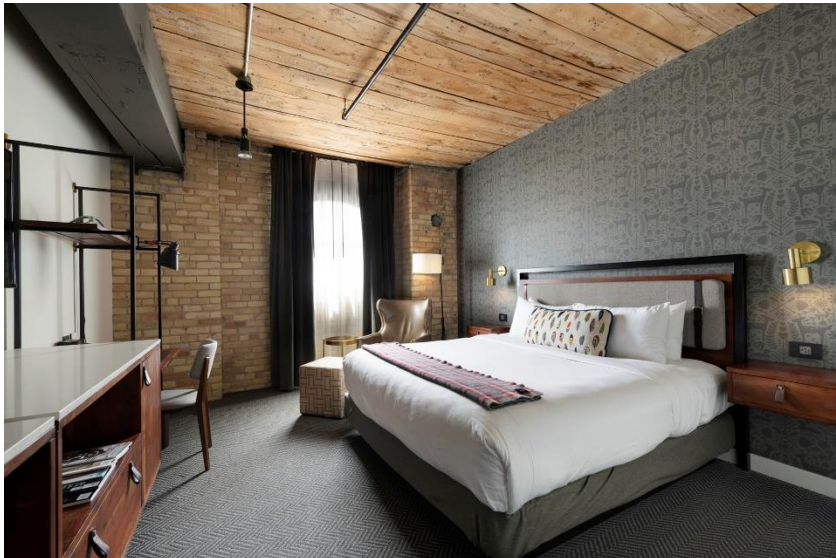
*Flight schedules are as of January 6<sup>th</sup>, 2025, and are subject to change.  
Minneapolis is on Central Time; it is two hours ahead of Pacific Time.*

Transfer independently to the hotel via taxi or ride-share service (Uber, Lyft). *The approximate transfer time is 20-30 minutes.*



Check in to **The Hewing**, a boutique hotel in a converted, century-old brick-and-timber warehouse in downtown's North Loop neighborhood.  
ADDRESS: 300 N. Washington Avenue

*Pre- and post-tour nights are subject to availability and rates vary depending on availability. As of December 5<sup>th</sup>, the rate for the Sunday night before the tour was \$229; the rate for the Saturday night after the tour was \$369, excluding taxes of 15.025%. Please contact Meg MacDonald at Travel Muse Inc. for current rates.*



7:30 p.m. Evening reception at the hotel in a private room off the main restaurant.  
Dinner is on your own. *A list of suggested Restaurants will be provided.*



*Minneapolis Institute of Art's historic facade*

**Tuesday, May 13<sup>th</sup>**  
**MINNEAPOLIS**

**Breakfast**

9:30 a.m. Meet in the lobby and arrange ride-share services (Uber/ Lyft).

9:40 a.m. Depart The Hewing by ride-share service. *10 min. by car*

9:55 a.m. Arrive for a full day of tours at **Minneapolis Institute of Art**, one of the finest and most comprehensive Asian art collections in the country. Specific subsets and highlights of these collections, which occupy 22 galleries, rival the holdings of museums across the globe.

ADDRESS: 2400 Third Avenue South

Curator-led and guided tours will focus on Asian art galleries boasting some 16,800 objects, ranging from ancient pottery and bronzes to works by contemporary artists, with nearly every Asian culture represented.

For its stylistic diversity and condition, Mia's collection of ancient Chinese bronze is typically considered one of the nation's finest. Also in the Chinese art galleries are paintings, sculptures, furniture, jades, textiles, ceramics and precious metals. Installations feature highlights from the collection such as the Walker jade mountain (Chinese, 1784), the stone Kuan Yin (Chinese, late 6<sup>th</sup> century), and a round back folding chair (Chinese, 16<sup>th</sup> century).

Mia's Japanese collection has outstanding concentrations of Buddhist sculpture, woodblock prints, paintings, lacquer, works of bamboo, and ceramics, and is particularly rich in works from the Edo period (1610–1868). The permanent

display space for Japanese art is the largest in the Western world, with 15 galleries spanning more than 10,000 square feet.

Meanwhile, its Southeast Asian ceramics and sculpture include individual galleries devoted to Himalayan art, Indian art and the arts of the Islamic tradition.

Other highlights include four new period rooms, including two of the very few residential Chinese period rooms on display in the United States – an original 18<sup>th</sup> century scholar's study and rock garden from the Ch'ing Dynasty (1797) and a grand scale Ming Dynasty reception hall (circa 1600).

In addition to the Chinese rooms, two Japanese period rooms - a Tea House and a 17<sup>th</sup> century reception hall – may be seen.

10:00 am - 10:15 am *Hokusai | Monet* special exhibition (Cargill Gallery)

In 1897, the French painter Claude Monet made four paintings of the chrysanthemums in his garden in Giverny, capturing them not in a vase but *en plein air*—painting the flowers as they grew. He had been an avid collector of Japanese prints since the 1870s, and his unexpected, expressive use of space in this experiment recalls the Large Flowers series of prints made between 1833 and 1834 by Katsushika Hokusai. This exhibition brings the Large Flowers and Chrysanthemums series into conversation, exploring the symbiotic artistic connections between Japan and France in the nineteenth century.

10:15 am - 11:00 am Chinese Galleries with guide(s) who will highlight gems from Neolithic jades and ritual bronzes of the Bronze Age to ceramics, lacquer ware, furniture, and textiles of the pre-modern era, and contemporary painting.

A special exhibition, *From the Divine to Mortal: Storytelling in Chinese Painting*, is sure to impress with paintings whose subjects track the shift in focus from transcendent scenes evoking Buddhist and Taoist doctrines to scholar-officials and ordinary people going about their lives.

11:00 am - 12:30 pm Japanese permanent galleries (45 min.) and the special exhibition, *Transcendent Clay: The Kondō Family's Path of Porcelain Innovations* (45 min.) with **Dr. Andreas Marks**, Mary Griggs Burke Curator of Japanese and Korean Art, Director of the Clark Center for Japanese Art.

This special exhibition features works by three generations of the Kyoto-based Kondo ceramic dynasty, and will be viewed before we attend a special lecture given by its curator, **Joe Earle**. Dr. Earle was the Director of Japan

Society Gallery in New York until 2012 and has held leadership positions in Asian art departments at the Victoria and Albert Museum, London, and the Museum of Fine Arts, Boston.

Spanning almost a century of creativity, *Transcendent Clay* offers a panoramic look at the achievements of the Kondō family of ceramicists based in Kyoto, Japan. The legacy of porcelain-making began with Kondō Yūzō (1902–1985) in the 1930s and continued with his sons Yutaka (1932–1983) and Hiroshi (1936–2012), who broke free to pursue original, individual expressions. Ultimately it was the grandson Takahiro (born 1958) who emerged as the family’s greatest innovator by developing the secret technique of applying a “silver mist” (*gintekisai*) of metallic droplets to his modern forms.

This exhibition brings together a wide range of works including freehand-painted vases, pure-white jars, and Takahiro’s dramatic shapes and textures, which he describes as “water born from fire.” Most of the works are from the collection of Carol and Jeffrey Horvitz, long-time supporters of Mia.



IMAGE: Kondō Takahiro (Japanese, born 1958), *Reduction I (detail)*, porcelain with blue and green underglazes and “silver mist” overglaze. The P.D. McMillan Memorial Fund, 2014.64, © Kondō Takahiro

12:30-2 p.m. Lunch on your own. Options include:

- Agra Culture Kitchen, a coffee shop and cafe in the main lobby offering tasty, healthy bowls, salads, sandwiches and more. *Open during all museum hours.*  
<https://www.agra-culture.com/menus/>
- “Eat Street” in the Whittier neighborhood (walking distance from Mia), has Vietnamese, American, Caribbean, Mexican, pizza and other restaurants. See:  
<https://www.whittieralliance.org/whittier-dining-guide.html>
- Jade Dynasty (6 min. by car south of Mia)  
<https://jadedynasty.kwickmenu.com/>

2:00 p.m. Guided tour of the ***Tibetan Buddhist Shrine Room: The Alice S. Kandell Collection***, which includes more than two hundred gilt-bronze sculptures,

paintings, silk hangings, and carpets that were created in Tibet between the 1300s and early 1900s. Buddhist ritual objects are displayed in the context of an elaborate private household shrine, a space used for offerings, devotional prayer, rituals, and contemplation. With its flickering candlelight, sonorous chanting, and the subtle smell of incense, the glittering room provides an oasis for peaceful contemplation within the galleries at Mia.

2:30 p.m. Guided tours of galleries in the European Art Department, specifically *Cassatt on Paper* and *The Story of Queen Artemisia: Part One*

4:00 p.m. Tours end.

Return to the hotel at leisure by ride-share service.

Evening Dinner and the evening are on your own.

OPTIONAL EVENING AT THE GUTHRIE THEATER (6 min. by car; 25 min. on foot from *The Hewing*)

*The Mousetrap*, Agatha Christie's thriller. Consider going on May 13<sup>th</sup> or 14<sup>th</sup>. <https://www.guthrietheater.org/shows-and-tickets/2024-2025-season/the-mousetrap/>

*The Nacirema Society Requests the Honor of Your Presence at a Celebration of Their First One Hundred Years*, a clever Southern comedy. Consider going on May 13<sup>th</sup> or 14<sup>th</sup>.

<https://www.guthrietheater.org/shows-and-tickets/2024-2025-season/the-nacirema-society/>

*Both plays begin at 7:30 p.m.; tickets are \$32-92 including handling fees.*





*The Museum of Russian Art, housed in a former church since 2005*

**Wednesday, May 14<sup>th</sup>**  
**MINNEAPOLIS**

**Breakfast**

- 9:00 a.m. Meet in the lobby.
  
- 9:15 a.m. Depart The Hewing to the Sculpture Garden (*12 min., 2 miles*).
  
- 9:30 a.m. Guided tour with a Walker Educator of the **Minneapolis Sculpture Garden**, showcasing more than 60 works from the Walker Art Center’s renowned collections of modern and contemporary art in the setting of an urban park. The Garden is a partnership between the Walker and the Minneapolis Park & Recreation Board, a national award-winning park system.  
 ADDRESS: 725 Vineland Place
  
- 10:30 a.m. Walk from the Sculpture Garden to the Walker.
  
- 10:45 a.m. Arrive at **Walker Art Center** (*shown at right*), whose collection represents works of modern and contemporary art, especially focused after 1960. Its holdings include more than 13,000 pieces, including books, costumes, drawings, media works, paintings, photography, prints, and sculpture.  
 ADDRESS: 725 Vineland Place (main entrance, across from the Sculpture Garden)



Private guided tour (*1 hour*) focusing on the following exhibitions:

- [\*Ways of Knowing\*](#)  
The exhibition captures ways that artists from across the globe engage with research and resist conventional assumptions about how information should be gathered, documented, and shared. Among the 11 featured artists are Petrit Halilaj, Gala Porras-Kim, Eduardo Navarro, and Rose Salane.
- [\*Pan Daijing: Sudden Places\*](#)  
The artist's first US-based museum exhibition, which will feature a dark and poetic abstract landscape created especially for the institution as well as several new works.

11:45 a.m. Time on your own to explore the galleries.

12:45 p.m. Lunch on your own at Cardamom, The Walker's café at the base of the hillside overlooking the Minneapolis Sculpture Garden. Cardamom's menu is influenced by the Aegean and Mediterranean seas.  
<https://www.cardamommpls.com/>

2:30 p.m. Depart the Walker to The Museum of Russian Art (*10 min., 6 miles due south*)

2:45 p.m. Arrive at **The Museum of Russian Art** (TMORA) for a private guided tour with **Maria Zavalova**, Curator and Head of Exhibitions and Collections.  
ADDRESS: 5500 Stevens Avenue

In the two decades since its establishment, TMORA has built a remarkably diverse permanent collection of works, ranging from paintings and sculpture to objects of folk art and cultural artifacts. Beginning with the 2002 donation of seven paintings from the Museum's founders, the collection has grown at a fast pace, reaching thirteen thousand items in 2022. Initially a collection of paintings, TMORA's holdings have branched off to map the rich cultural landscapes of the Russian Empire and the Soviet Union. TMORA's unique and extensive collections include Soviet-era posters, nonconformist art from the post-WWII Soviet era, holiday ornaments, 20th-century nesting dolls, collections of early 20th century peasant woodwork crafts, portraits of an aristocratic Russian family that fled revolutionary Russia, collections of figurines from major Soviet porcelain factories, postage stamps and currency, lacquer boxes, samovars, folk clay toys, and more. These have been increasingly useful in mounting exhibitions from TMORA's own holdings, rather than having to depend upon loaned works for the display in the Museum's four galleries. 95% of the collections originate from Russia within its 1991 borders.

4:30 p.m. Tour ends. The fabulous museum shop is not to be missed!

5:00 p.m. Depart TMORA to the Hewing. (*20 min. 6 to 8.6 miles*)

5:30 p.m. Arrive back at The Hewing.

Evening Dinner and the evening are on your own.

OPTIONAL EVENING AT THE GUTHRIE THEATER:

*See May 13<sup>th</sup> performance information*



*Weisman Art Museum at the University of Minnesota, designed by the Canadian-born American architect Frank Gehry, completed in 1993, and renamed in honor of art collector and philanthropist Frederick R. Weisman.*

**Thursday, May 15<sup>th</sup>**  
**MINNEAPOLIS**

**Breakfast**

- 9:30 a.m. Meet in the lobby.
- 9:40 a.m. Depart The Hewing to the Weisman Art Museum on the UMN campus (*12 min., 2.7 miles*).
- 10:00 a.m. Guided tour at the **Weisman Art Museum** with Senior Curator **Diane Mullin** of its Korean and American collections on view.  
ADDRESS: 333 E. River Road

The variety and breadth of the Weisman’s collection of traditional Korean furniture is unmatched in the United States, and is perhaps unrivaled outside Asia. The collection includes about 200 examples of Choson dynasty (1392–1910) furniture, 80 Silla dynasty (668–935 B.C.) stoneware pieces, some 150 folk paintings and wooden bowls and utensils, in addition to other folk arts and crafts. The collection came to the Weisman Art Museum as a bequest from Dr. Edward Reynolds Wright Jr. in 1988.

WAM's permanent collection features a prominent holding (approximately 20,000 works) of art of the United States, including an internationally significant collection from the first half of the twentieth century, featuring the world's largest holdings of works by Marsden Hartley, Alfred H. Maurer, and B.J.O. Nordfeldt.

11:30 a.m. OPTIONAL: Explore the **public art of the campus of the University of Minneapolis** (self-guided). A map and descriptions may be found here: <https://storymaps.arcgis.com/stories/b9a60162175f4109b17b770561385a97>

Lunch Local eatery on your own. *A List of Suggested Restaurants will be provided.*

Afternoon Two possible visits (*to be confirmed*).

Visit a **private collection of Soviet-era realist art**

Take a private guided tour of the **Purcell-Cutts House**, a masterpiece of Prairie School Architecture. Designed and built by William Gray Purcell and George Grant Elmslie, the house has been extensively restored and is part of the collection of the Minneapolis Institute of Art.

*Due to its historic design, parts of the Purcell-Cutts House are inaccessible to some people with limited mobility. Tours involve two sets of stairs, the restroom is in the basement, and there is no elevator. Gallery stools are available.*

*Tours will begin and end at the house itself.*

ADDRESS: 2328 Lake Place

Late Afternoon OPTIONAL: Return to **Minneapolis Institute of Art** for additional tours or time to explore on your own.  
ADDRESS: 2400 Third Avenue South

6:00 p.m. Attend a **lecture by Joe Earle** at **Mia** related to the Kondo porcelain exhibition, in which he will focus on the Kondo family history.

A **panel discussion** will follow with **Kondo Takahiro, Joan Mirviss, Matthew Welch** and **Andreas Marks**, who will discuss Takahiro's works. (*Kondo Takahiro will arrive the day before the program.*)

Dinner is on your own. Consider dining at a restaurant on nearby "Eat Street."



*The Swan Turnblad Mansion (1903-10) now housing the American Swedish Institute, was added to in 2012 for expanded gallery space, reception area, shop and café.*

**Friday, May 16<sup>th</sup>**  
**MINNEAPOLIS**

**Breakfast, Dinner**

- 9:00 a.m. Meet in the lobby.
- 9:10 a.m. Depart The Hewing to the American Swedish Institute (*15 min., 2.8 miles*).
- 10:00 a.m. Visit the **American Swedish Institute** (ASI) for a guided tour of the Turnblad Mansion and its special exhibition.  
ADDRESS: 2600 Park Avenue

ASI maintains a collection of more than 7,000 objects related to Sweden and Swedish America as well as generational collections documenting immigration and settlement in America. Among its many objects, ASI houses one of the finest collections of Swedish art glass outside of Sweden, and an exemplary collection of flat-plane wood carvings.

Special Exhibition

***Ann Wolff: The Art of Living***

With over five decades on the international scene, acclaimed Swedish artist Ann Wolff (b. 1937) has earned recognition as one of the world's foremost artists working with glass, known for her distinctive sculptural creations. Her deeply personal approach to her life-long artistry extends beyond glass to metal, concrete, drawing and photography exploring themes of identity, self-expression, and the art of living. From large glass and concrete sculptures to delicate nickel silver castings, this exhibition explores Wolff's multifaceted artistic evolution from the early 2000s to the present. This is the largest presentation of artworks by Wolff outside of Sweden, featuring works on loan from private collections,

including the Minnesota-based Cafesjian Art Trust. Works by are displayed throughout the historic Turnblad Mansion.

On view on the Lower Level:

The remarkable Norse Saga Room, a fairy-tale-like room that exemplifies mythology brought to life through masterful woodworking and folk art. The room was designed for a luxurious apartment in Stockholm for a wealthy Swedish businessman, Anders Andersson (1859-1929). In the early 1980s it was acquired at auction by Minneapolis entrepreneur Curtis L. Carlson, who installed it at his corporate headquarters in Minnetonka, where it remained until 2019, at which time it was installed at ASI.

<https://asimn.org/exhibition/norse-saga-room/>

12 noon Lunch and the afternoon are on your own. Lunch options:

- FIKA, ASI's Nordic-inspired café. With the historic Turnblad Mansion in full view, guests dining at FIKA can choose from a seasonal menu dedicated to regional ingredients and New Nordic cuisine. In warm weather, dine outdoors on one of the best patios in the Twin Cities and take in the Turnblad Mansion's courtyard gardens.

*Walk-ins are welcome, but the café is unable to handle the entire group at one time unless pre-arranged with a limited menu. Indoor and outdoor tables are available on a first-come, first-served basis.*

- Eateries near Mill City Museum (*Sawatdee Thai Restaurant is recommended*)

Afternoon FREE TIME

For local history, consider visiting the **Mill City Museum** (*allow one hour minimum*). Take a self-guided tour the National Historic Landmark Washburn A Mill Complex, the home of Mill City Museum, focusing on how the flour mill operated and the lives of the people who worked there.

*Flour Tour is a timed entry, though no extra cost.*

ADDRESS: 704 South 2<sup>nd</sup> Street

Return to The Hewing at leisure. (*7 min., 1.1 miles by care; 22 min. on foot*)

7:00 p.m. Farewell dinner at **Spoon and Stable**, whose Executive Chef Gavin Kaysen received the James Beard Award for Best Chef: Midwest in 2018.

ADDRESS: 211 North First Street (*2 blocks, 5 minutes on foot*)



*China, Ming dynasty (1368-1644), Funerary model of a wedding procession, Carved and molded earthenware with yellow and green glaze and pigments, Gift of funds from Mr. and Mrs. Charles Cleveland, Donna and Cargill MacMillan Jr., and The John R. Van Derlip Fund, 89.60.1*

**Saturday, May 17<sup>th</sup>**

**Breakfast**

**DEPART MINNEAPOLIS OR EXTEND YOUR STAY**

Our tour officially ends after breakfast. Return home or extend your stay.

*The trip is limited to 20 SAA members. Registrations accepted on a first-come, first-served basis.*